



---

## Outliers removal in samples for water detection: managing clouds and sunglint

### **Welcome to ICube,**

Created in 2013, the laboratory brings together researchers from the [University of Strasbourg](#), the [CNRS](#) (French National Center for Scientific Research), the [ENGEES](#) and [INSA](#) of Strasbourg in the fields of engineering and computer science, with imaging as the unifying theme.

With around 650 members, [ICube](#) is a major driving force for research in Strasbourg whose main areas of application are biomedical engineering and sustainable development.

[SERTIT](#), a service platform of ICube, known for its ISO certified rapid mapping service, is seeking to accelerate its automatic mapping activities. This service assists in post-crisis emergency management.

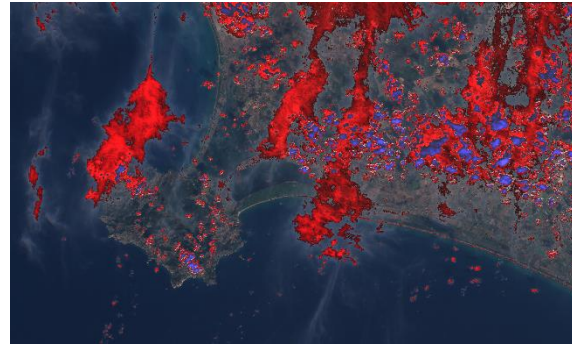
Organized horizontally, SERTIT operates with a people centric approach, which fosters a friendly community and culture. Join us to be part of our mission to put satellite imagery in service of those in need.

### **Mission**

- Collaborate with the SERTIT team to propose and code a sunglint detector or sunglint probability warning
- Collaborate with the SERTIT team to propose and code a refinement to the existing cloud detector:
  - Handle more sensors
  - Refine the existing code
- If possible, propose a Machine Learning approach for cloud detection
- Evaluate the thematic performance of the methods and algorithms over different sensor classes
  - With/without SWIR channels,
  - According to the resolution, ...



Sunlint



Cloud detection

## Role

- Bibliography for sunlint and cloud detection
- Implement a sunlint alarm system
- Analyze and refine the workflow for cloud detection
- Propose a cloud detector based on Machine Learning
- Validate the chain over selected lakes/reservoirs.

## Skills

Must have:

- Experience in optical remote sensing
- Experience in GIS, spatial analysis with QGIS and/or ArcGIS
- Experience in software development and scripting (Python)
- Have excellent communication skills and a strong team player
- Good knowledge of English, French is not mandatory
- Can-do attitude!

Nice to have or interested in learning:

- Knowledge of High Resolution (Sentinel-2, Landsat, Planet) products
- Notions in Machine Learning

## Profile

- Undergraduate student of a remote sensing/geomatics degree or similar

## Benefit

- Work Placement Allowance: 550 € / month

**Some press about us:**

[Who is SERTIT ?](#) (Youtube video)

**Join Us:**

To apply, send us an email to [dev-sertit@unistra.fr](mailto:dev-sertit@unistra.fr), be sure to include your C.V. and a cover letter to let us know why you think you would be a good fit.

DURATION and STARTING DATE: 6 months starting at spring/summer 2023

LOCATION: Strasbourg, France